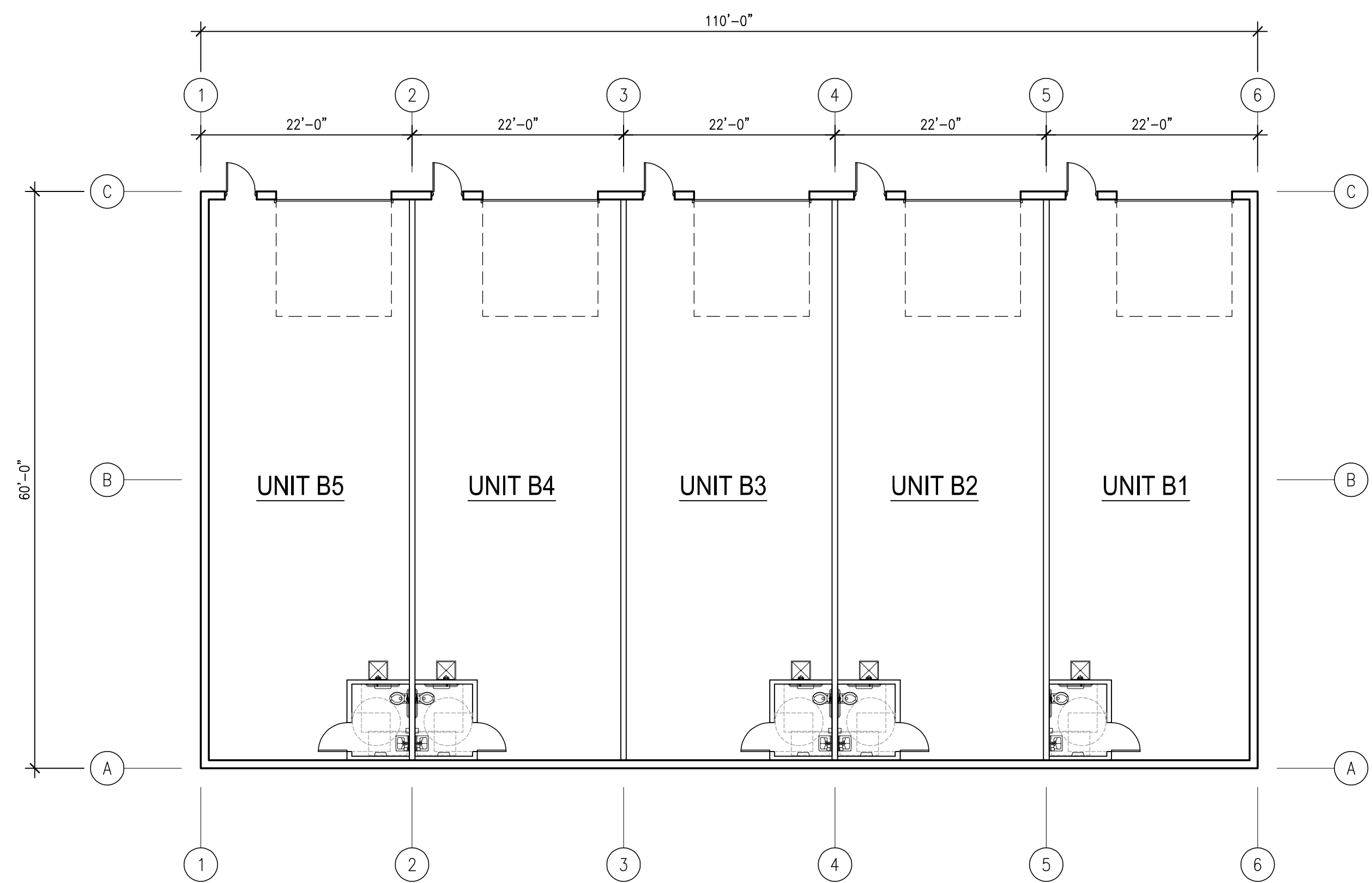
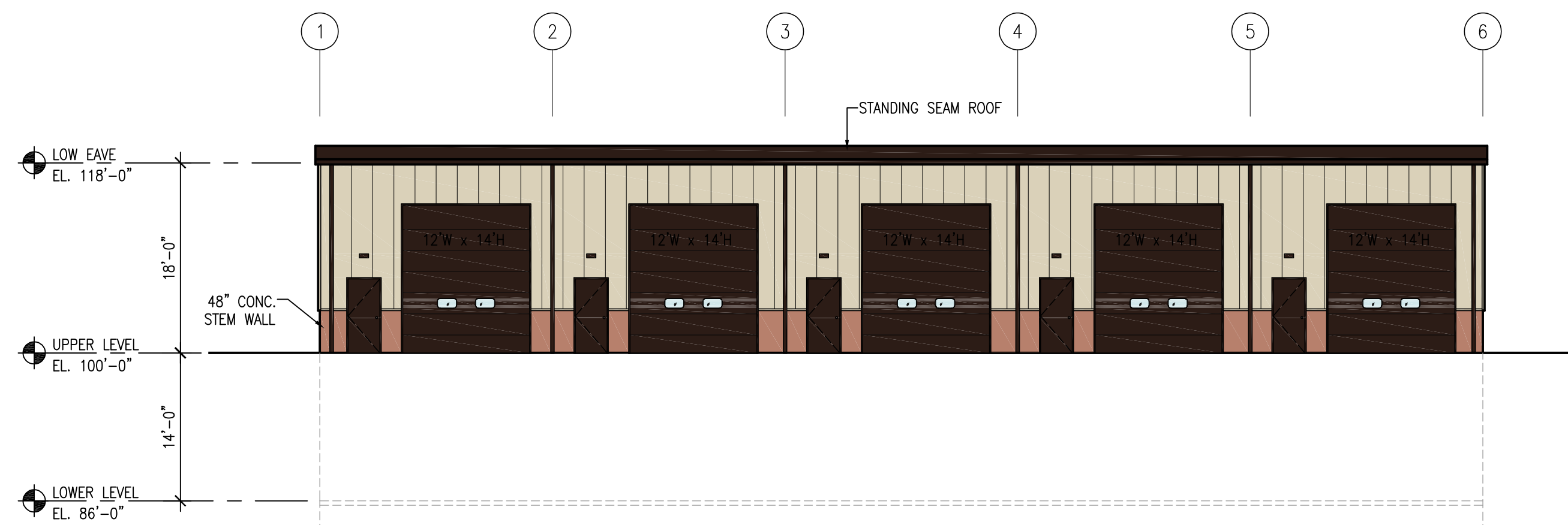


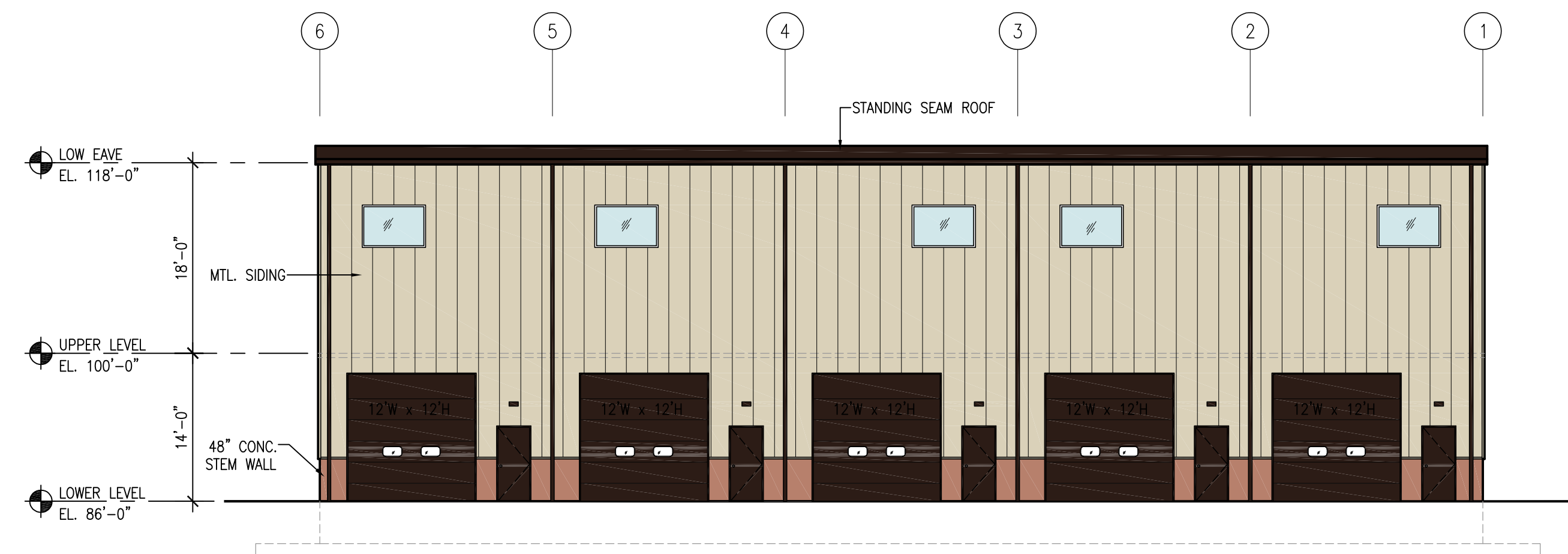
1 UPPER LEVEL CONCEPTUAL FLOOR PLAN  
 CP-1 3/32" = 1'-0"



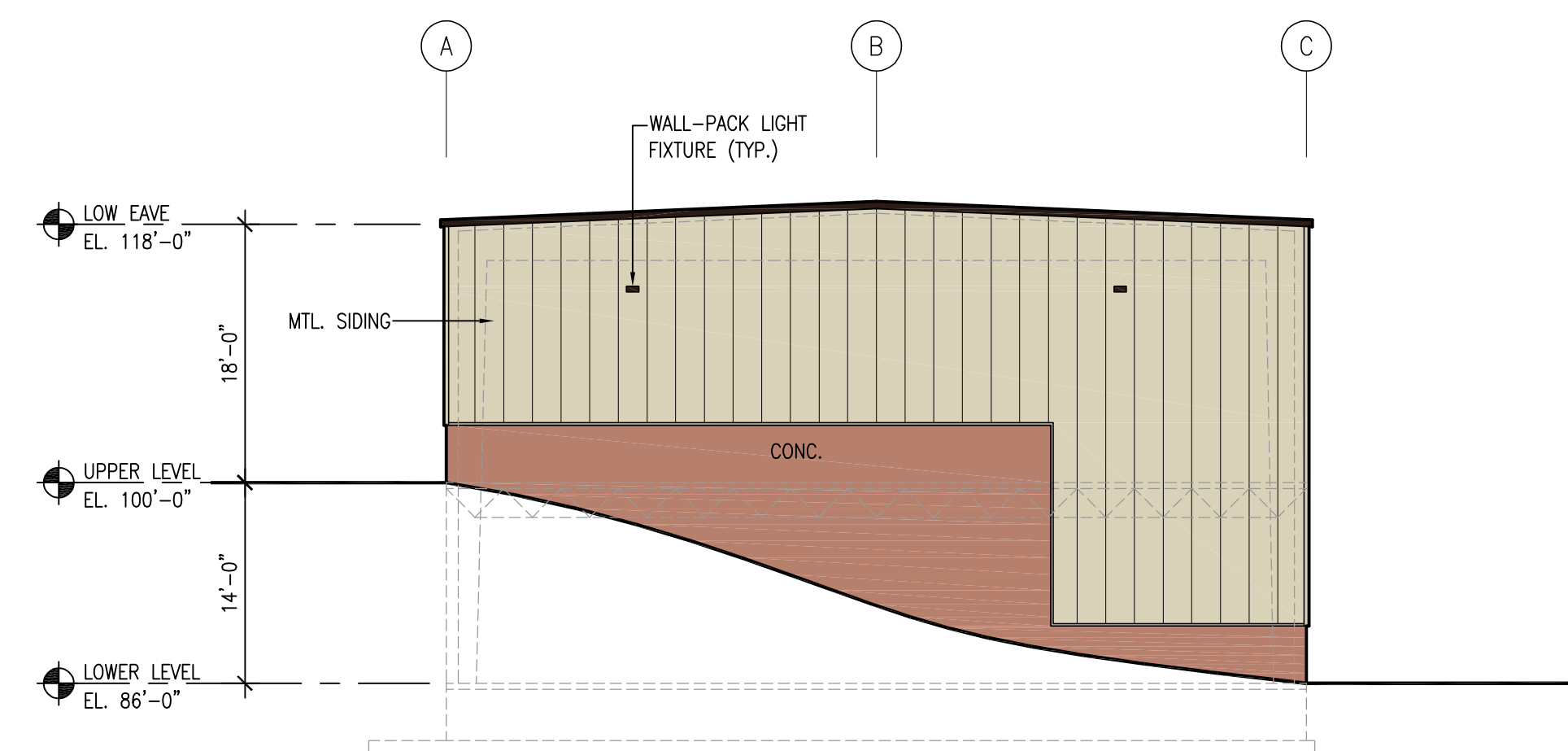
2 LOWER LEVEL CONCEPTUAL FLOOR PLAN  
 CP-1 3/32" = 1'-0"



3 WEST CONCEPTUAL ELEVATION  
 CP-1 3/32" = 1'-0"



4 EAST CONCEPTUAL ELEVATION  
 CP-1 3/32" = 1'-0"



5 SOUTH CONCEPTUAL ELEVATION (NORTH OPP. HAND)  
 CP-1 3/32" = 1'-0"

**GR Engineering, LLC**  
 Licensed Professional Engineers  
 Design/Build Services  
 135 East Main Street - Unit #5  
 Thomaston, Connecticut 06787  
 (860) 258-5000  
 info@gr-engineering.net

COPYRIGHT © 2021  
 BY GR ENGINEERING, LLC.  
 THIS DOCUMENT IS THE  
 SOLE PROPERTY OF  
 GR ENGINEERING, LLC AND MAY  
 NOT BE USED, REPRODUCED OR  
 DISTRIBUTED WITHOUT THE  
 EXPRESS WRITTEN PERMISSION  
 FROM GR ENGINEERING, LLC

**PROPOSED INDUSTRIAL BUILDING**  
 320 Captain Lewis Drive  
 Southington, Connecticut  
 Prepared For  
**G & Z PROPERTIES, LLC**

Gary Reola, P.E. #23741

No.	Description	Date

Sheet Name:  
**CONCEPTUAL FLOOR PLANS & EXTERIOR ELEVATIONS**  
 Project #: 21001.24 Issue Date: 04/30/21  
 Sheet No.: **CP-1**  
 Drawn By: BP Checked By: GR

Z:\PROJECTS\21001.24 - G&Z Properties, LLC - Southington, CT - G&Z Properties, LLC - Industrial Building - 21001.24\043021\21001.24.dwg