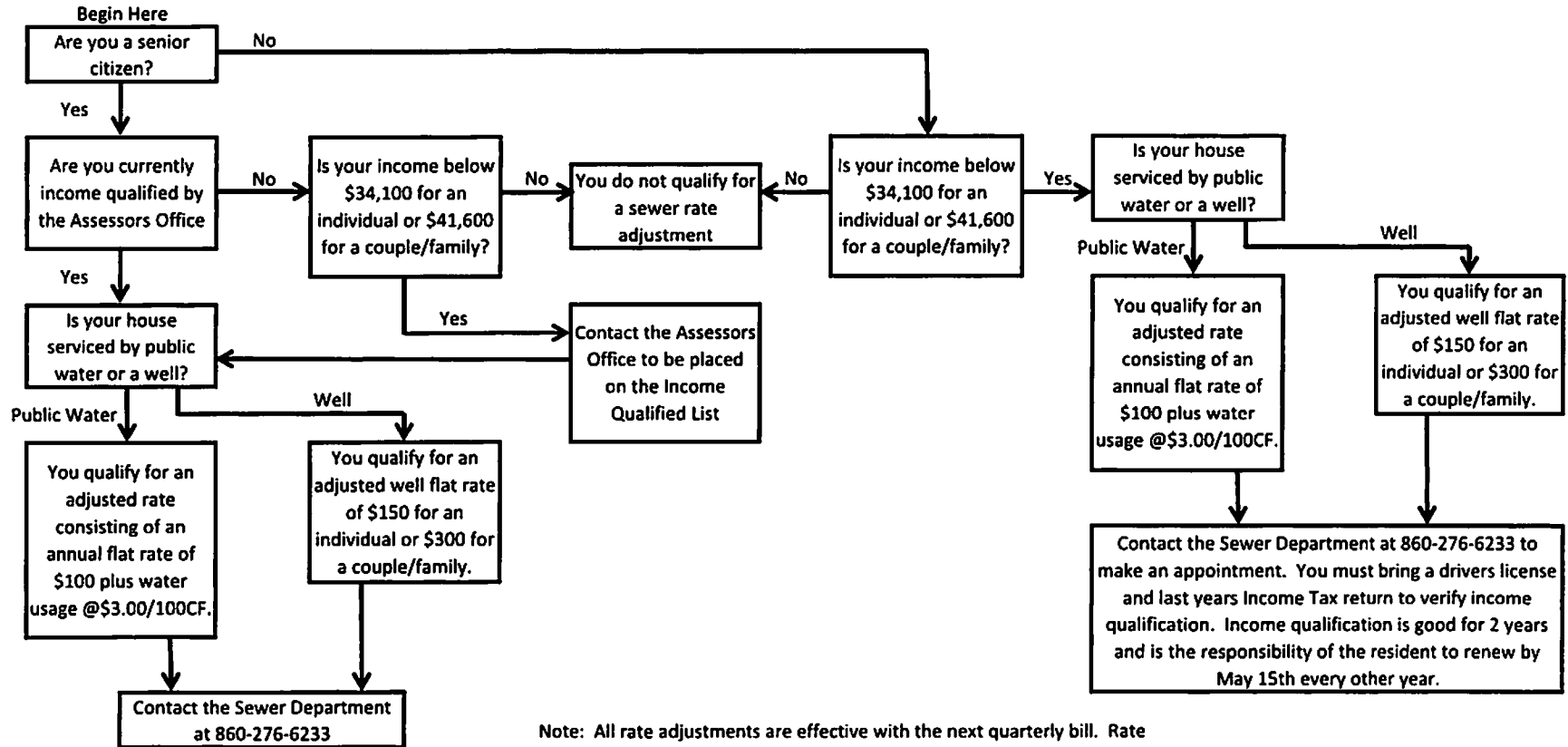


SOUTHINGTON SEWER DEPARTMENT SEWER RATE APPEAL PROCEDURE

USE THE FLOW CHART BELOW TO DETERMINE IF YOU QUALIFY FOR AN INCOME QUALIFIED SEWER RATE ADJUSTMENT

Residents may appeal the sewer rate increase. Rates will only be adjusted for those residents with incomes falling below the thresholds set by the State of Connecticut Office of Policy and Management for the Tax credits for the Elderly and Totally Disabled Homeowners.



Note: All rate adjustments are effective with the next quarterly bill. Rate adjustments will not be retroactive and no refunds or credits will be given.